



### In This Issue

- HIPAA and Meaningful Use Analysis
- Using SecurityConnect for Risk Analysis
- Data Archival From Legacy Applications
- Enterprise-wide Access Management
- Patient Care During Downtime
- Data Loss Prevention Programs
- Care Coordination Program Launched
- HIE Implementation Services
- Matching Hospitals and Health IT Innovators

## HIPAA and Meaningful Use Analysis

BluePrint has been very involved in 2011 with conducting security and privacy risk analyses for HIPAA and Meaningful Use.

Some of the Hospitals working on these analyses with BluePrint are

- **Capital Health**
- **CentraState Healthcare System and their community-wide HIE**
- **Children's Specialized Hospital**
- **New Jersey Hospital Association**
- **Robert Wood Johnson University Hospital – Hamilton**
- **Robert Wood Johnson University Hospital – New Brunswick**
- **Robert Wood Johnson University Hospital – Rahway**
- **Somerset Medical Center**
- **Trenton Health Team HIE**
- **Selected Physician Practices affiliated with hospitals**

## Using SecurityConnect for Risk Analysis

BluePrint has been utilizing its SecurityConnect portal software to conduct a HIPAA/Meaningful Use Risk Analysis for **Children's Specialized Hospital (CSH)**.

The methodology includes distributing security assessment questionnaires to each of the departments within CSH in order to determine the level of risk as it pertains to protected health information (PHI) followed by an onsite assessment of each of the departments to validate responses and test the security controls.

Once these assessments are complete, BluePrint security analysts will rate each of the risk in terms of impact and likelihood of occurrence and will develop a Remediation Plan in conjunction with CSH management.

Scan and visit our website  
[www.blueprinthis.com](http://www.blueprinthis.com)





## Data Archival From Legacy Applications Made Easy

BluePrint has started the implementation of its ArchiveConnect solution at **Main Line Healthcare (MLH)** in Pennsylvania.

Healthcare organizations are constantly faced with issues of data archival and retention from legacy applications that might be put out of production due to reasons such as end of contract, end of life, end of support, server crashes or high costs of maintenance.

ArchiveConnect provides a platform to archive legacy data in a central repository with very low maintenance costs. Its intuitive browser-based screens allow users to easily search and view the archived data whether it is discrete data elements or scanned documents and images. At the end of the engagement, MLH will have archived data from 21 legacy applications spanning clinical and patient accounting data which its users will be able to access in case of a legal or operational need.

## Enterprise-wide Access Management Automated

**Barnabas Health (BH)** has been enjoying the benefits of utilizing BluePrint's AccessConnect application for managing employee terminations across all their facilities. Due to a totally online process involving virtual work queues and automated alerts, it has become much easier for BH to manage terminations and better adhere to termination policies. Extensive reporting capabilities make the process more transparent.

AccessConnect addresses the entire lifecycle of access management by automating the workflow for access establishment, modification and termination.

AccessConnect now features the Active Directory Provisioning Module (ADPM). IT departments will now be able to automate the process of creating, modifying and deactivating user accounts in Active Directory based on their Human Resources, administrative, or security policies. AccessConnect ensures greater compliance and audit readiness.

## Continue To Provide Patient Care During Downtime

BluePrint is deploying its DowntimeConnect application in **Somerset Medical Center (SMC)**. It is more important than ever for hospitals to deliver uninterrupted patient care and safety during any downtime. DowntimeConnect provides access to critical patient information for physicians, nurses and other staff members in the event of a planned or unplanned downtime.

Instead of periodically printing or collecting patient information, DowntimeConnect constantly processes ADT and clinical events in real time through HL-7. This provides access to the most updated patient information during the downtime. Patient notes and patient transports can be entered into the application during downtime and exported for input into the HIS system later.



## Care Coordination Program Launched in Sept 2011

This summer marked the launch of the BluePrint Healthcare IT Care Coordination Optimization Program. In September 2011, **CentraState Healthcare System (CSHS)** engaged BluePrint to perform a Care Coordination Optimization workflow analysis for their **Oncology and Cancer Services** related areas. BluePrint will identify current state Oncology workflows and then work with CSHS's Oncology as well as Information Systems Departments to design future state business processes. Once documentation of oncology patient workflows is complete, BluePrint will identify how CSHS's health information exchange platform can be leveraged to more effectively engage physicians and patients in the management of their care.

The Oncology Care Coordination workflow requirements initiative provides critical insight into key business processes that affect patient care and the experience of oncology patients while being treated at CSHS.

***"Now that CentraState has built critical information exchange infrastructure technologies, we can use them to improve the flow of information at the point of care. It is our intention to extend health information exchange capabilities across the CSHS community to more efficiently connect our patients and physicians."***

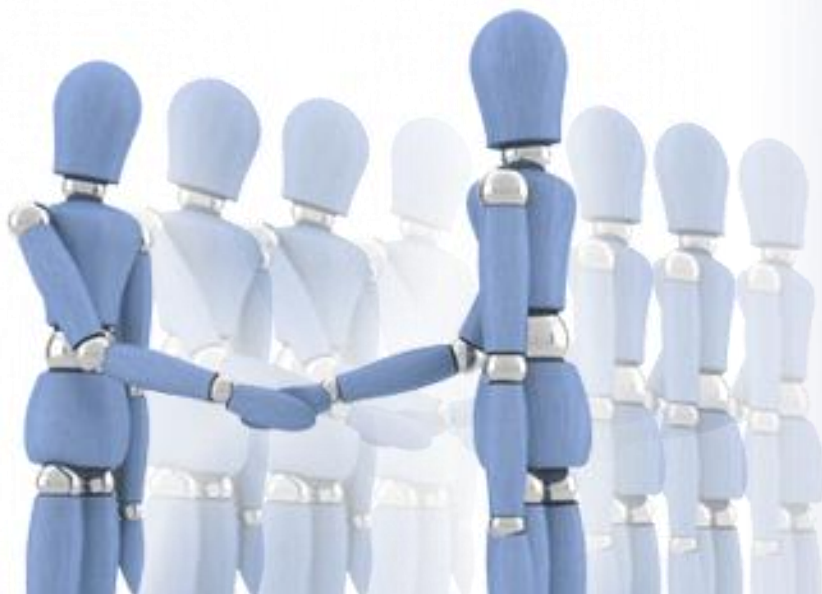
- Neal Ganguly, Vice President and Chief Information Officer - CentraState Healthcare System

The BluePrint Care Coordination program also includes a solution for collaborative hospital discharge planning using an **eDischarge Planning** app with mobile and tablet devices. eDischarge Planning connects the patient-care team in real-time and keeps all parties focused on the needs of the patient so the discharge process is efficient, organized, timely and compliant with hospital policies. Effective discharge planning has been shown to improve patient safety, care quality and satisfaction. It has also been co-related to reductions in patient re-admits because the proper care and education was delivered. This innovative technology even makes automatic discharge notification calls to the patients doctors and the family providing truly coordinated care.

## Data Loss Prevention Programs Reduce Security Risks

BluePrint is working with **Somerset Medical Center (SMC)** on its Data Loss Prevention (DLP) system. In this initiative, BluePrint installed the DLP appliances, deployed the endpoint agents and tested the configuration. BluePrint is working on configuring network monitoring, policies, whitelists and auditing. Currently, BluePrint's Security Analyst is monitoring the DLP system to identify potential areas of risk. BluePrint is designing procedures for alerting and notification should a threat be discovered thereby increasing the level of preparedness at SMC.

BluePrint has also been working with another hospital client on their DLP system. For this role, BluePrint is functioning as an advisor to work with their Information Systems department to create appropriate policies to discover relevant security risks and rules to manage actions taken to address these risks.



# Three HIEs Using Blueprint HIE Implementation Services

Blueprint launched its HIE Implementation Services in 2010 to provide a comprehensive set of services which help hospitals and HIEs accelerate their pace of deployment and adoption. In New Jersey, Blueprint is working with three HIE initiatives: **CentraState Healthcare System's** community-wide HIE, **Trenton Health Team's** regional ACO-focused HIE and **Barnabas Health's** Enterprise HIE which includes six hospitals and their affiliated physician practices.

Blueprint's original HIE capabilities included Strategic and Operational Planning, Project Management and Coordination, an HIE Security Framework (pathway to HITRUST Certification) as well as Data Management and Validation. This year we added Care Coordination Optimization & Adoption, Marketing/Communications and Outreach, Public Policy and Innovation Acceleration. Working with clients to achieve the full value and benefits of their HIE is the focus of our HIE Implementation Services.

We design solutions that allow hospitals and providers to leverage HIE to electronically connect the "touch-points" and address the gaps in their care management workflows. Whether a hospital is seeking to reduce ED re-admits, increase physician affinity, raise the quality and efficiencies of a specific line of service, or realize better financial performance and outcomes, an HIE is the key "enabling" component.

Blueprint's robust deployment-ready framework and real-world implementation experience help our clients avoid barriers to adoption and utilization. Ultimately costs will be reduced and return-on-investment accelerated.

## Blueprint Healthcare IT [www.blueprinthis.com](http://www.blueprinthis.com)

Vikas Khosla  
President and CEO  
[vikas.khosla@blueprinthis.com](mailto:vikas.khosla@blueprinthis.com)  
Mobile: 732.690.0885

Mike Squires  
VP, Strategic Development & Public Policy  
[mike.squires@blueprinthis.com](mailto:mike.squires@blueprinthis.com)  
Mobile: 908.391.6191

Rebecca Goldberg  
Director, Care Coordination and Strategic Development  
[rebecca.goldberg@blueprinthis.com](mailto:rebecca.goldberg@blueprinthis.com)  
Mobile: 732.675.8954

Mohit Pasricha  
Chief Solutions Architect  
[mohit.pasricha@blueprinthis.com](mailto:mohit.pasricha@blueprinthis.com)  
Mobile: 732.742.0236

Greg Michaels  
Director, Security and Compliance Solutions  
[greg.michaels@blueprinthis.com](mailto:greg.michaels@blueprinthis.com)  
Mobile: 732.910.3751



## Matching Hospitals and Health IT Innovators

*"The first Innovation Exchange for Health IT took place in Philadelphia earlier this year (May 26, 2011), under the leadership of Blueprint Health IT."*

-Wil Yu, Special Assistant, Innovations, Office of the National Coordinator

Each Blueprint Health IT Innovation Exchange Summit brings together 10 Health IT Innovators and 10 Hospitals in a speed dating format, following a careful pre-Summit selection process to produce the most likely matches. Developed in collaboration with HIMSS, under a framework supported by ONC and the White House Startup America initiative. For more information visit [www.blueprinthis.com/summit](http://www.blueprinthis.com/summit).

Participants and Advisory Board Members include representatives from:

- Geisinger Health System (PA)
- Intermountain Healthcare (UT)
- Beth Israel Deaconess Medical Center (MA)
- St. Vincent Health (Ascension Group) (IN)
- Penn Medicine (PA)
- CentraState Healthcare System (NJ)
- Christiana Care Health System (DE)
- Barnabas Health (NJ)
- Main Line Health (PA)
- Stanford Hospitals & Clinics (CA)
- St. Joseph Health System (CA)
- Vanguard Health Systems (TN)

